

MIDFIELD MESSENGER


Autumn term 2
Edition

Dear Parents and Carers,

We hope you all had a wonderful and restful half-term break, enjoying some quality time together as a family. The children have returned full of energy, and it's been fantastic to see them back in school, ready for an exciting new half of term.

You may notice that this edition of our newsletter includes not only the latest updates from this week but also some highlights from the end of last term. Unfortunately, due to staff illness, we weren't able to send it out before the break as planned. We appreciate your understanding and are delighted to finally share all the fantastic things that have been happening in school.

Next week marks the first anniversary of our Outstanding OFSTED Inspection and as such we have been exploring with children this week what the difference between Good and Outstanding looks like. Children have spent the week demonstrating to us the difference and we have created a competition between classes which has been very exciting to see!

Inside this edition, you'll find wonderful stories of achievements, events, and activities that have taken place recently. From classroom projects to various events, it's been a busy and exciting time for our school community. We love celebrating the hard work, creativity, and enthusiasm of our pupils, and we know you'll enjoy reading all about it.

Before the break, Mr Le Conte announced his upcoming retirement which is taking place later this term. We are of course very saddened by this but know that the staff and children will continue to see him regularly in and around school. As difficult as it is to think of somebody else as the school's Deputy Headteacher; the search for the next Deputy at Midfield has commenced. I hope to update you later this term with updates in this regard.

Thank you for your continued support—we look forward to an inspiring and successful half-term ahead!

Warm regards,

Mr Osborn
Headteacher



MIDFIELD MESSSENGER

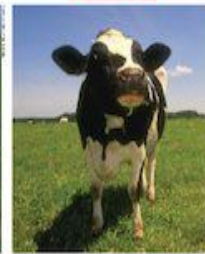


Butterflies Nursery

Welcome back Butterflies!

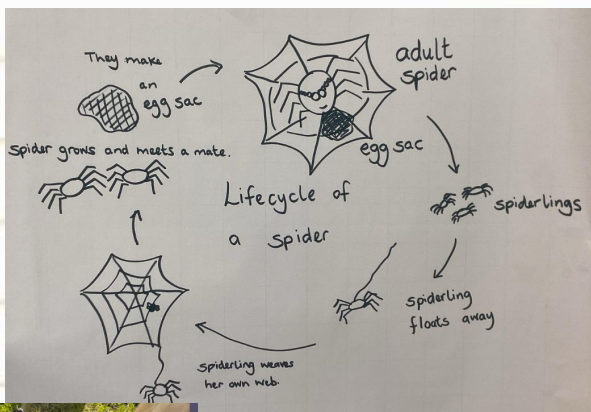
We have had a fantastic start to the new term.

In preparation for our trip to Godstone farm this week we have been learning all about farm animals.



Reception Bluebirds & Grasshoppers

What a fantastic start to the term we have had. We have started gymnastics in PE and have been learning to balance, jump, climb and roll. This week we have read the book Argh Spider. We have learnt about the lifecycle of spiders and lots of interesting facts. We are excited to learn about the lifecycles of lots more animals and humans. Our trip to Godstone Farm is happening in March and we are cannot wait!



MIDFIELD MESSENGER



Year 1 Owls & Ladybirds



In History, we have really enjoyed learning about toys from the past and comparing them to our toys in the present!



This term, we have begun our Literacy unit on the book 'Journey.' The children have been immersing themselves in the book and noticed a red door on the playground and made journey sticks in Forest School.



MIDFIELD MESSENGER

 Classroom News

Year 2 Foxes & Rabbits



We have started our new topic of River and Oceans and had a fun, engaging assembly on The River Cray.



In gymnastic we have been learning about balancing and moving along different apparatus.



To celebrate world mental health day we decided to go for a lovely walk in Scadbury.



MIDFIELD MESSENGER

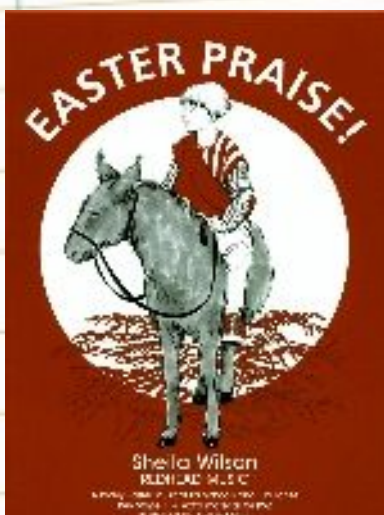
Classroom News

Year 3 Dragonflies & Hedgehogs

This half term we will be visiting the Bank of England Museum!



Dragonflies swim every Wednesday and Hedgehogs every Monday, Please remember your swimming hats!



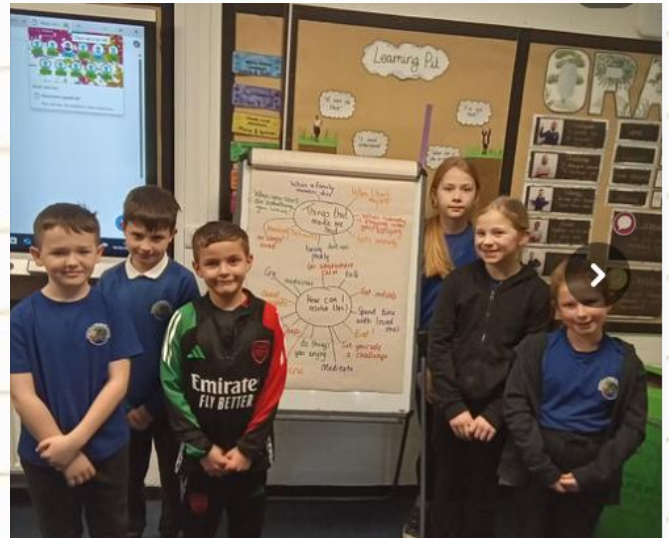
We are really excited about our up and coming Easter Performance.



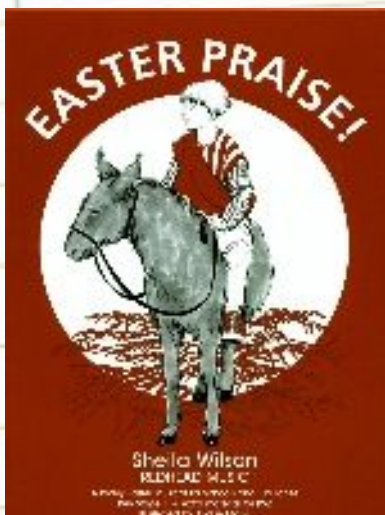
MIDFIELD MESSENGER



Year 4 Squirrels & Beetles



Year 4 have had a great February! We have been learning coping strategies during Mental Health Week and block printing in Art.



We are really excited about our up and coming Easter Performance.



MIDFIELD MESSSENGER

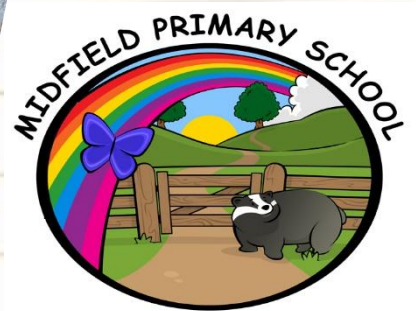


Year 5 Robins & Woodpeckers

Year 5 had a wonderful experience at the Churchill War Museum before half term, which aligned with our English book, 'Alex Rider', which is about spies.



We also had time to visit Buckingham Palace and we were lucky enough to see the Changing of the Guard.



MIDFIELD MESSENGER



Year 6

Ravens & Kestrels

We had a very busy term, filled with visitors about WW2, a trip to Scadbury for Children's Mental Health week and a trip to the Imperial War Museum.

We are really looking forward to celebrating Book Week and Science Week this term!



MIDFIELD MESSENGER

Tree House



Classroom
News



WHOLE SCHOOL ATTENDANCE

6th Jan 2025 - 14th Feb 2025

Bluebirds	92%	Grasshoppers	93%
Owls	96%	Ladybirds	94%
Foxes	92%	Rabbits	96%
Hedgehogs	94%	Dragonflies	95%
Squirrels	96%	Beetles	96%
Woodpeckers	96%	Robins	94%
Kestrels	96%	Ravens	95%

Total	95.6% (Midfield) 94.6% (National Average)
-------	--

Our whole-school target is 96% - Every day in school counts!



Scout & Hunter
encouraging good attendance

MIDFIELD MESSENGER



My name is Mary Simkins, some may know me as Leoma's and Naomi's mum, and I am excited to be taking over as PTA Chair this new year. I am thankful to Annabel and Joy for their guidance and support in handing over the reins over the next few months, and for the hard work and enthusiasm they have dedicated to the PTA during their tenure. Whilst it is sad to see Annabel and Joy move on to new and exciting challenges at the end of the academic year, I am really passionate in delivering a fun packed and fulfilling PTA events calendar with the help of the fantastic and tireless PTA team. It was great to see wide support for our recent Wear Red for Love and Friendship day before the Half Term, and all of the funds raised by the PTA continues to be used for enriching the school experience at Midfield Primary School, for all children and in support of the school. Some examples of how PTA fundraising has helped the school includes organising the Wiggly Wild Show during assembly, a Drumming Workshop and the Living Egg Project each year. The PTA supports Class Christmas Parties and activities including providing decorations and card making materials, and providing new playground and PE equipment, tools and storage cupboards. The PTA also contributes towards the Year 6 Leavers Ties and Hoodies each year. Please keep a look out for upcoming events on Dojo, such as the Spring Dance on Friday 4th April, and the Easter Competition coming up after the Easter Holiday. We are also planning a Family Quiz in May, and preparing for the Summer Fair in late June/early July. These events can't go ahead without the support of parent and teacher volunteers, so do please look out for opportunities to volunteer on a one-off event basis as a chaperone or in a specific role. I appreciate that joining the PTA may seem daunting, but there are opportunities to support us in other smaller ways. Always feel free to contact me by emailing midfield.pta@gmail.com with any questions or concerns, especially if you have an idea for future events. Thank you for your ongoing support of the PTA.

Best Wishes Mary

To be eligible for Pupil Premium, families should be in receipt of the following:

- Income support
- Income based Jobseekers Allowance
- Income-related Employment and Support Allowance
- Child Tax Credit (providing you are not also entitled to Working Tax Credit), with a gross annual household income of no more than £16,190 (as assessed by Her Majesty's Revenue and Customs-HMRC)
- Guarantee Element of State Pension Credit
- Support under part 6 of the Immigration and Asylum Act 1999
- Working Tax Credit run-on (the payment received for 4 weeks after you stop qualifying for Working Tax Credit)
- Universal Credit, with a net annual household income of £7,400 or less (after tax and not including any other benefits you receive).

Bromley link to apply for Pupil Premium:

<https://www.bromley.gov.uk/FreeSchoolMeals>





Spring Menu 2025

MIDFIELD PRIMARY SCHOOL

WEEKLY MENU

WEEK 1
WEEK 2
WEEK 3



	MONDAY	TUESDAY	WEDNESDAY	THURSDAY	FRIDAY
MAIN	SPAGHETTI BEEF BOLOGNESE (G/W)	PEPPERONI PIZZA (MK, G/W)	ROAST CHICKEN & GRAVY	CHICKEN ARRABBIATA (CE, G/W)	FISH FINGERS & CHIPS (F, G/W)
VEGGIE	VEGETABLE BOLOGNESE WITH SPAGHETTI (G/W) V	MARGHERITA PIZZA (MK, G/W)	CHEESE & TOMATO PASTY (E, MK, G/W)	TOMATO & OLIVE ARRABBIATA (G/W) V	VEGAN NUGGETS & CHIPS (G/W) V
SIDES	GARLIC BREAD & GREEN SALAD (MK*, SO*, G/W)	SEASONED POTATO WEDGES & BAKED BEANS (G/W)	RUSTIC ROAST POTATOES & MEDLEY OF SEASONAL VEGETABLES S	SEASONAL VEGETABLES S	BEANS OR PEAS
PUD	CHOCOLATE CAKE & FRESH CREAM (E, MK, SO*, G/W)	ICED VANILLA SPONGE (E, MK, SO*, G/W)	HONEY & RAISIN FLAPJACK (G/B*, O, W*)	FRESH FRUIT	CHOCOLATE CHIP COOKIE (E, MK, SO, G/W)

THEME DAYS



JACKET POTATO | DAILY SALAD BAR | HOMEMADE BREAD | FRESH FRUIT | SELECTION OF COLD DESSERT POTS

DATES

6TH JAN / 27TH JAN / 24TH
FEB / 17TH MAR

ALLERGENS

CE = CELERY F = FISH G/O = OATS L = LUPIN MU = MUSTARD SO = SOYA * = MAY CONTAIN
CR = CRUSTACEAN G = GLUTEN G/R = RYE MK = MILK N = NUTS SU = SULPHUR V = VEGAN
E = EGGS G/B = BARLEY G/W = WHEAT MO = MOLLUSCS P = PEANUTS SE = SESAME SEEDS S = SEASONAL VEG



WEEKLY MENU

WEEK 1
WEEK 2
WEEK 3



	MONDAY	TUESDAY	WEDNESDAY	THURSDAY	FRIDAY
MAIN	BEEF BURGER & HOMEMADE POTATO WEDGES (SE*, SO, SU, G/W)	CHICKEN & TOMATO BASIL PASTA (CE, G/W)	ROAST BEEF & GRAVY	MAKHANI CHICKEN CURRY (MK, G/B*, O*, R*, W*)	BATTERED FISH & CHIPS (F, G/W)
VEGGIE	VEGETABLE BURGER & HOMEMADE POTATO WEDGES (SE*, G/W) V	TOMATO & BASIL PASTA (CE, G/W) V	THYME & GARLIC ROASTED QUORN (G/W) V	JERK VEGETABLE BURRITO (CE, G/B*, O*, R*, W) V	MARGHERITA PIZZA (MK, G/W)
SIDES	BAKED BEANS OR COLESLAW (E)	GARLIC BREAD & GREEN SALAD (MK*, SO*, G/W)	RUSTIC ROAST POTATOES & SEASONAL VEGETABLES S	RICE & PEAS SELECTION OF SEASONAL VEGETABLES S	BEANS OR PEAS
PUD	CHOCOLATE CAKE & FRESH CREAM (E, MK, SO*, G/W)	LEMON DRIZZLE CAKE (E, MK, SO*, SU, G/W)	STRAWBERRY MOUSSE (MK)	CHOCOLATE & ORANGE BROWNIE (E, MK, SO, G/W)	FRUIT JELLY

JACKET POTATO | DAILY SALAD BAR | HOMEMADE BREAD | FRESH FRUIT | SELECTION OF COLD DESSERT POTS

THEME DAYS



DATES

13TH JAN / 3RD FEB / 3RD MAR / 24TH MAR

ALLERGENS

CE = CELERY F = FISH G/O = OATS L = LUPIN MU = MUSTARD SO = SOYA * = MAY CONTAIN
CR = CRUSTACEAN G = GLUTEN G/R = RYE MK = MILK N = NUTS SU = SULPHUR V = VEGAN
E = EGGS G/B = BARLEY G/W = WHEAT MO = MOLLUSCS P = PEANUTS SE = SESAME SEEDS S = SEASONAL VEG



WEEKLY MENU

WEEK 1
WEEK 2
WEEK 3



	MONDAY	TUESDAY	WEDNESDAY	THURSDAY	FRIDAY
MAIN	CHICKEN FAJITAS (G/W)	BEEF BURGER & SEASONED POTATO WEDGES (SE*, SO, SU, G/W)	ROAST CHICKEN & GRAVY	MOROCCAN MEATBALLS & RICE (SO, SU, G/B*, O*, R*, W)	FISH FINGERS & CHIPS (F, G/W)
VEGGIE	VEGETABLE & BEAN FAJITA (CE, MU, G/B*, O*, R*, W) V	VEGETABLE BURGER & HOMEMADE POTATO WEDGES (SE*, G/W) V	ROASTED VEGETABLE FILO PARCEL & HOMEMADE TOMATO SAUCE (G/W) V	ROASTED QUORN & VEGETABLES WITH TOMATO SAUCE & RICE (CE, E)	VEGGIE SAUSAGE ROLL & CHIPS (MK*, SO, G/B, W)
SIDES	RICE & SWEETCORN	BAKED BEANS OR COLESLAW (E)	RUSTIC ROAST POTATOES & SEASONAL VEGETABLES S	SEASONAL VEGETABLES S	BEANS OR PEAS
PUD	CARAMEL APPLE CRUMBLE & CUSTARD (MK, G/W)	RICE KRISPIE CAKE (E, MK, SO, G/B, W)	VANILLA SHORTBREAD BISCUIT (G/W)	CHOCOLATE MOUSSE (MK)	ICE CREAM (MK)

JACKET POTATO | DAILY SALAD BAR | HOMEMADE BREAD | FRESH FRUIT | SELECTION OF COLD DESSERT POTS

THEME DAYS



DATES

20TH JAN / 10TH FEB / 10TH MAR / 31ST MAR

ALLERGENS

CE = CELERY F = FISH G/O = OATS L = LUPIN MU = MUSTARD SO = SOYA * = MAY CONTAIN
CR = CRUSTACEAN G = GLUTEN G/R = RYE MK = MILK N = NUTS SU = SULPHUR V = VEGAN
E = EGGS G/B = BARLEY G/W = WHEAT MO = MOLLUSCS P = PEANUTS SE = SESAME SEEDS S = SEASONAL VEG



Save the date



- 3/3 - 5/3 - Scholastic Book Fair
- 6/3 - World Book Day
- 10/3 - 21/3 - Reception Living Eggs programme
- 11/3 - 12/3 - Wiggly Wild Show Workshops
- 21/3 - Nursery Trip to the Library
- 25/3 - Hedgehogs Class Bank of England Museum
- 25/3 - Reception - Year 6 Parent Consultation Evening
- 26/3 - Nursery and Reception trip to Godstone Farm
- 27/3 - Parent Consultation Evening
- 27/3 Dragonflies Class Bank of England Museum
- 1/4 - Treehouse Trip Pizza Express
- 1/4 - 9.30am Reception Stay and Play session 1
- 2/4 - CASPA - wear green to be seen 2025
- 2/4 - 10.30am Reception Stay and Play session 2
- 3/4 - 9.30am Year 3 / 4 Easter Performance
- 4/4 - 9.30am Year 3 / 4 Easter Performance
- 24/4 - 10.00am ARP Tour
- 30/4 - Treehouse Trip Godstone Farm
- 2/5 - Class Photos
- 6/5 - Hedgehogs Class Pizza Express
- 7/5 - Dragonflies Class Pizza Express
- 12/5 and 13/5 - Reception Trip to the shops
- 12/5 - 15/5 Year 6 SATS
- 16/5 - Year 6 Trip to the Beach
- 2/6 - Staff Inset Day
- 3/6 - 10.00am Nursery New Starter Admin Meeting
- 10/6 - 9.45am Nursery Open Morning
- 11/6 - Year 3 Trip to The Knole
- 11/6 - 9.00am New Reception starters parent meeting
- 16/6 and 17/6 - Reception Bike and Scooter Day
- 18/6 - 13.30pm New Reception starters Stay and Play 1
- 2/7 - 13.30pm New Reception starters Stay and Play 2



**NO PETS OR
ANIMALS ON
SCHOOL
GROUNDS**

A polite reminder that animals are not permitted on site*

While we appreciate that our four-legged friends are 'part of the family' and are often child-friendly, animals present a risk for allergy sufferers as well as potential hygiene issues should nature call. As always and in accordance with relevant guidance, *guide-dogs and other assistance animals are welcome on site as needed.

We appreciate your understanding in this matter.

Midfield extra curricular clubs

Midfield Clubs

- Football @Lunchtime
- Games Club
- Chess Club
- Beekeeping Club
- Lego Club
- 4 Square/Basket Ball
- 11+ intervention
- School Choir
- Bee Club
(commencing soon)

External Providers

- Football
- Swimming
- Ballet
- Gymnastics
- STEM Club
- Performing Arts
- Science Club
- Street Dance

Bexley Music

- Guitar
- Violin
- Flute
- Piano/Keyboard